



US Army Corps of Engineers
BUILDING STRONG®

Hurricane Ida Adv. 10

For Planning Purposes Only!

WASHINGTON, DC
17:55:58
28 Aug 2021

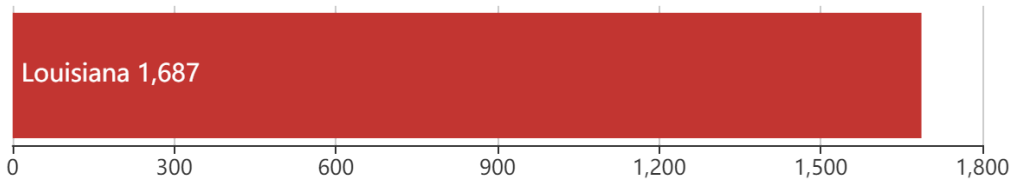
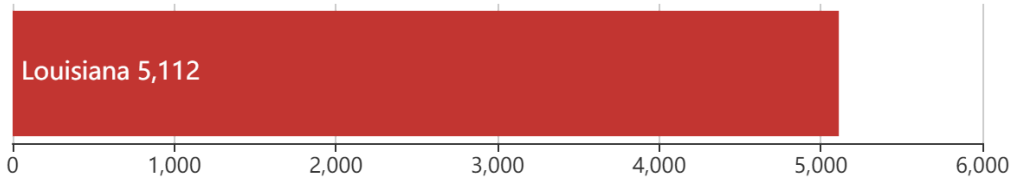
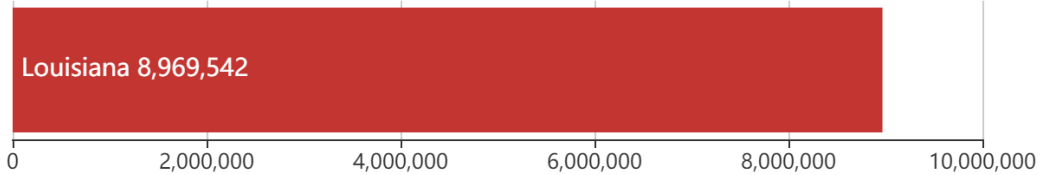
CHICAGO
16:55:58
28 Aug 2021

LOS ANGELES
14:55:58
28 Aug 2021

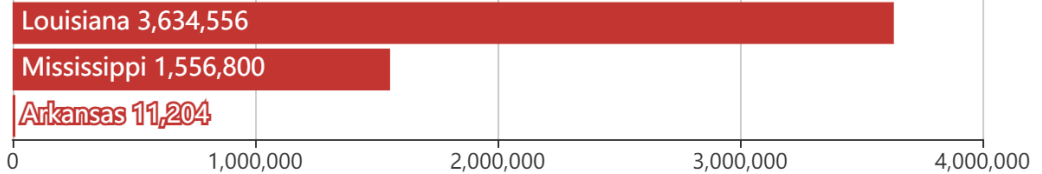
<https://go.usa.gov/xFJeK>

Updated as of 28 Aug 2021 (4:55 PM Central Daylight Time)

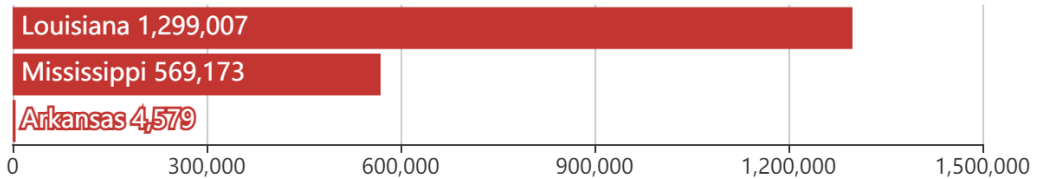
Debris



Population



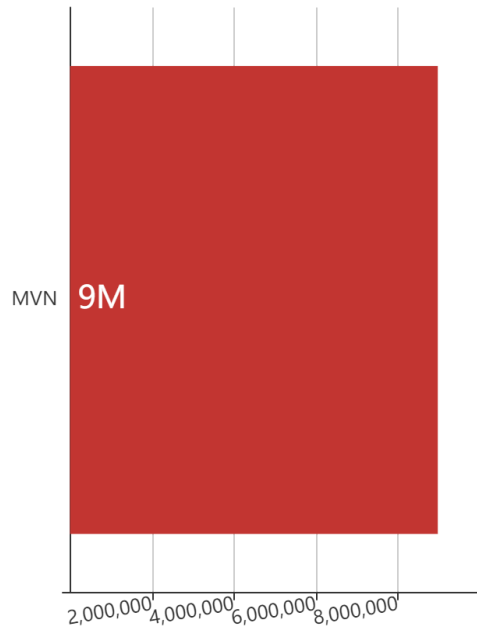
Households



Mission Model Summary

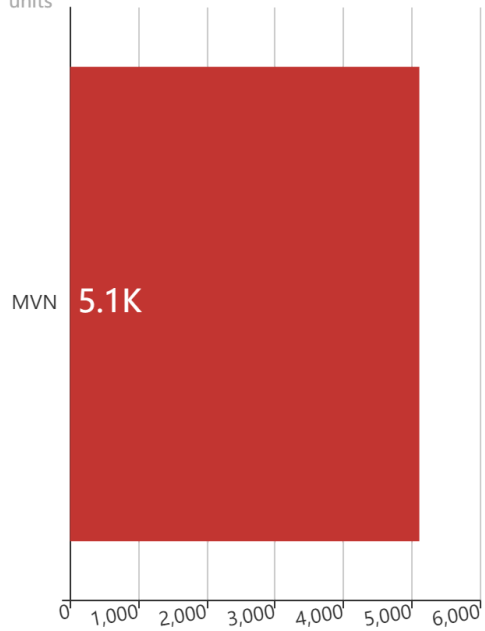
Debris By USACE District

cu. yd.

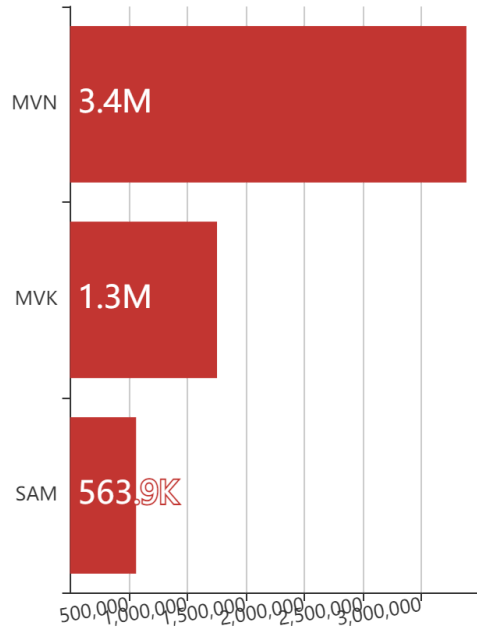


Est. Temp. Roofing By USACE District

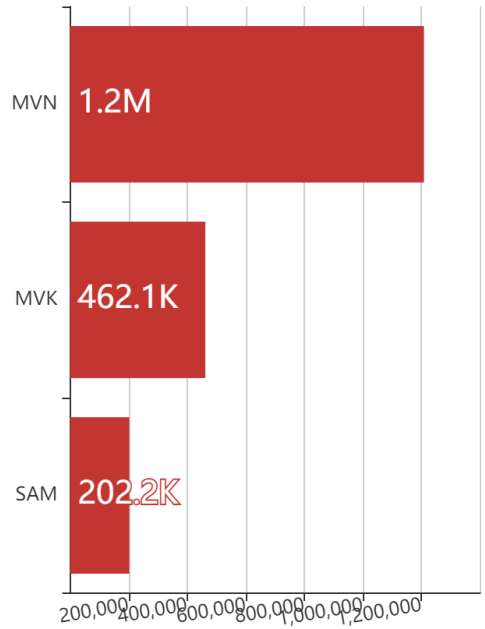
units



Population By USACE District



Households By USACE District



Critical Infrastructure Summary

Total

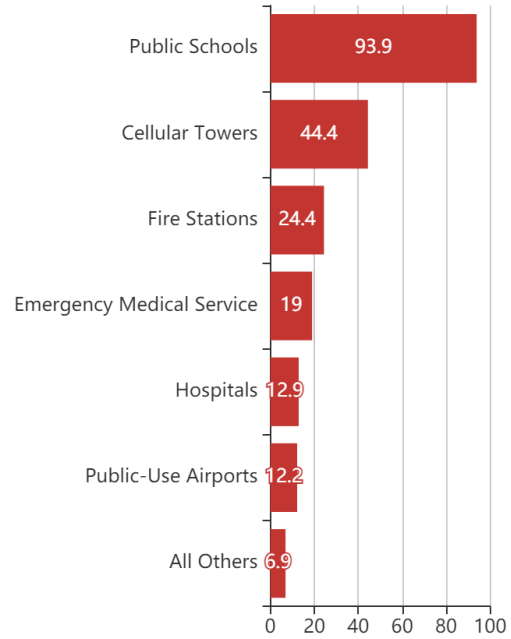


Power Requirements



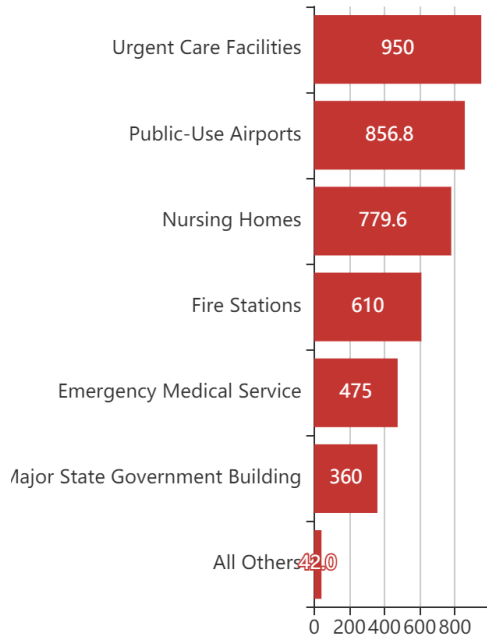
Generators

By Generator Count



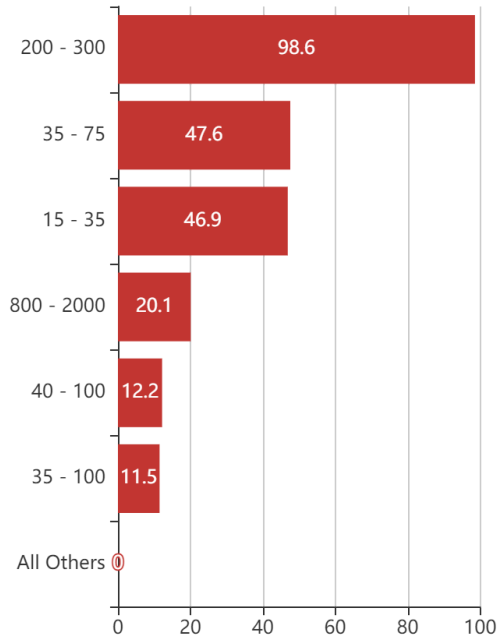
Generators

By Power Requirement



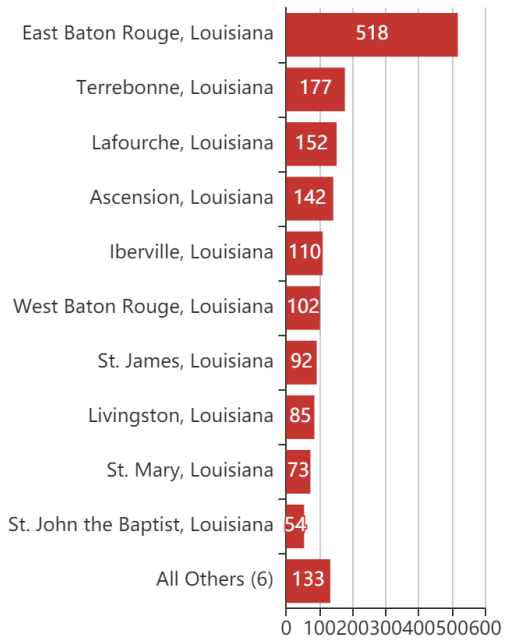
Generators

By Range



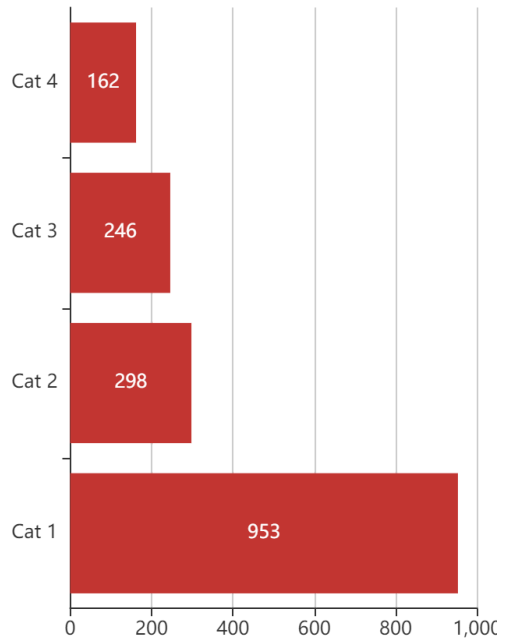
Structures

By County



Structures

By Intensity

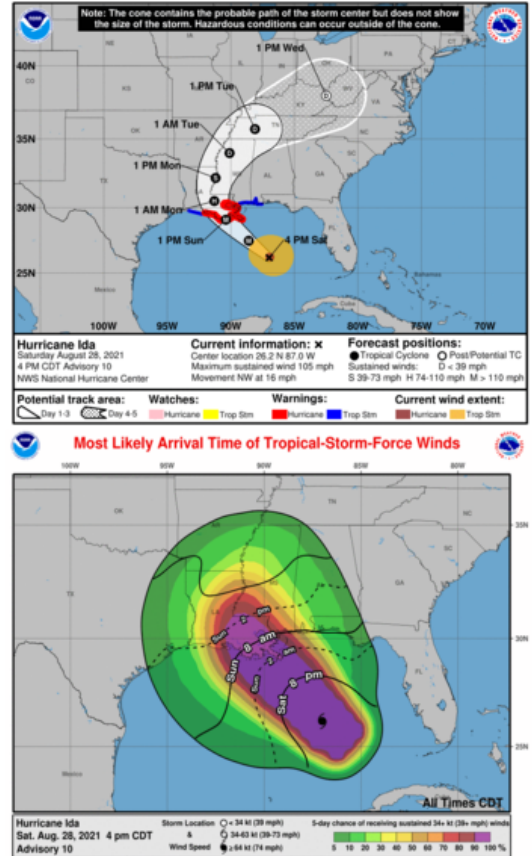




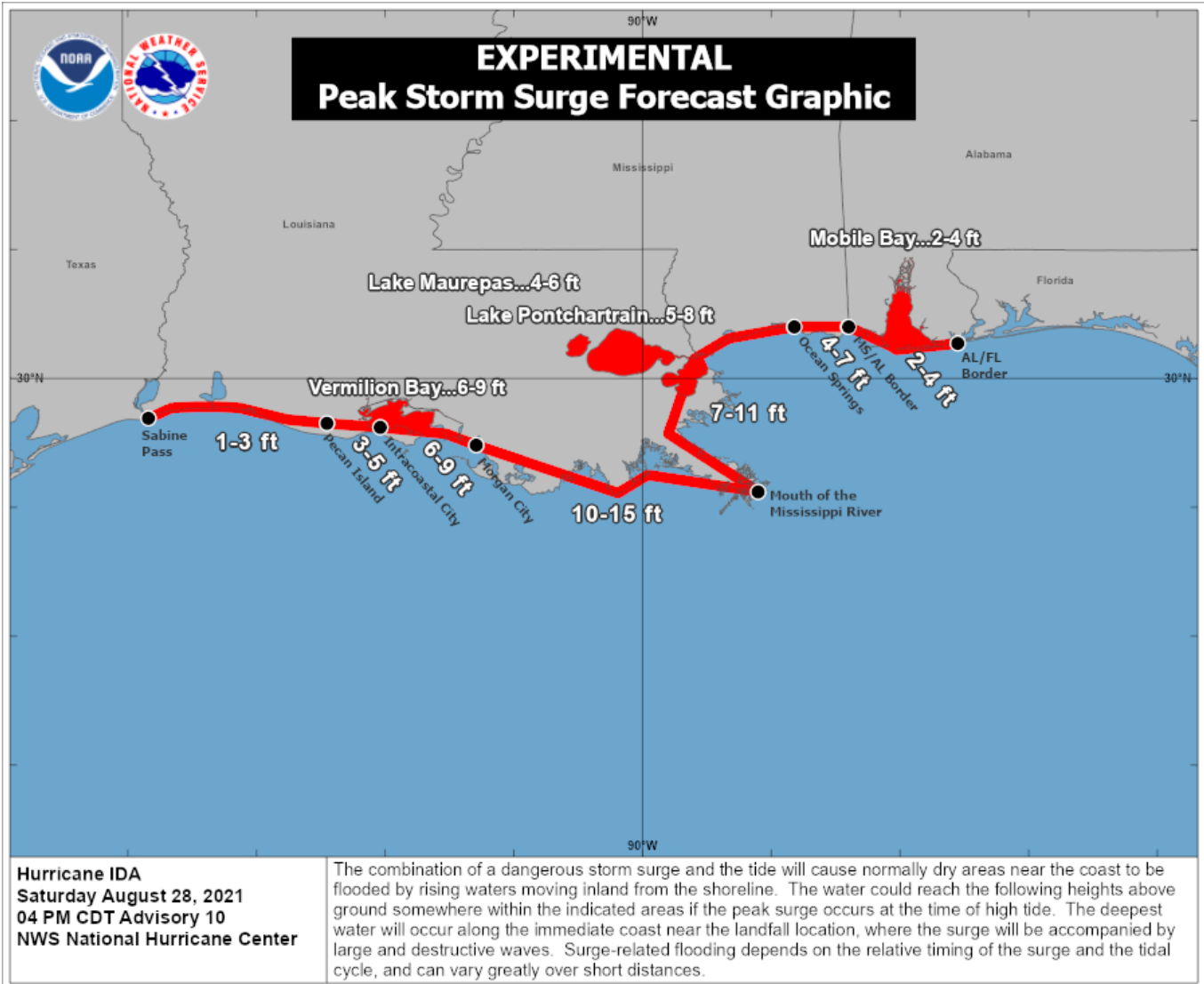
Key Messages for Hurricane Ida

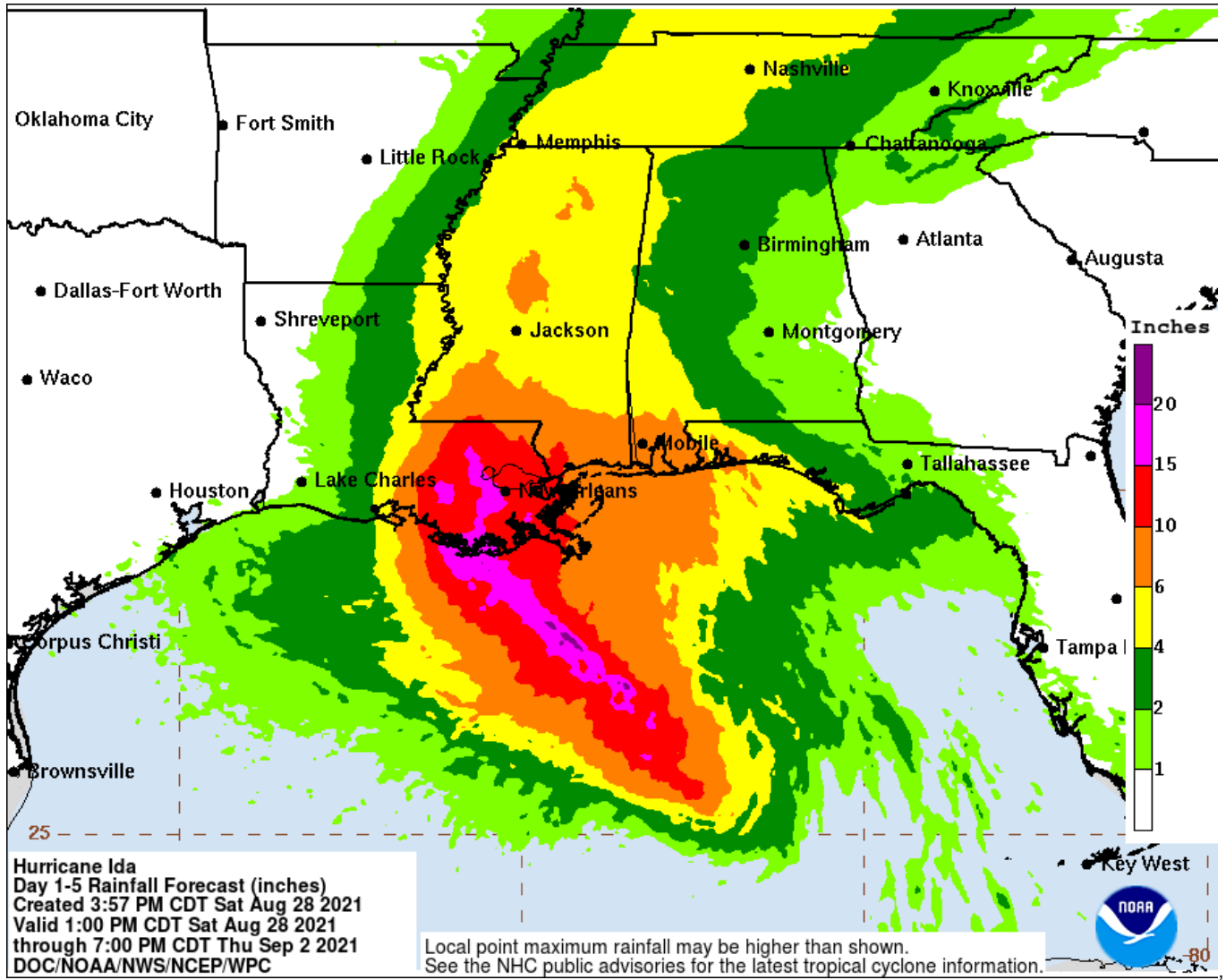
Advisory 10: 4:00 PM CDT Sat Aug 28, 2021

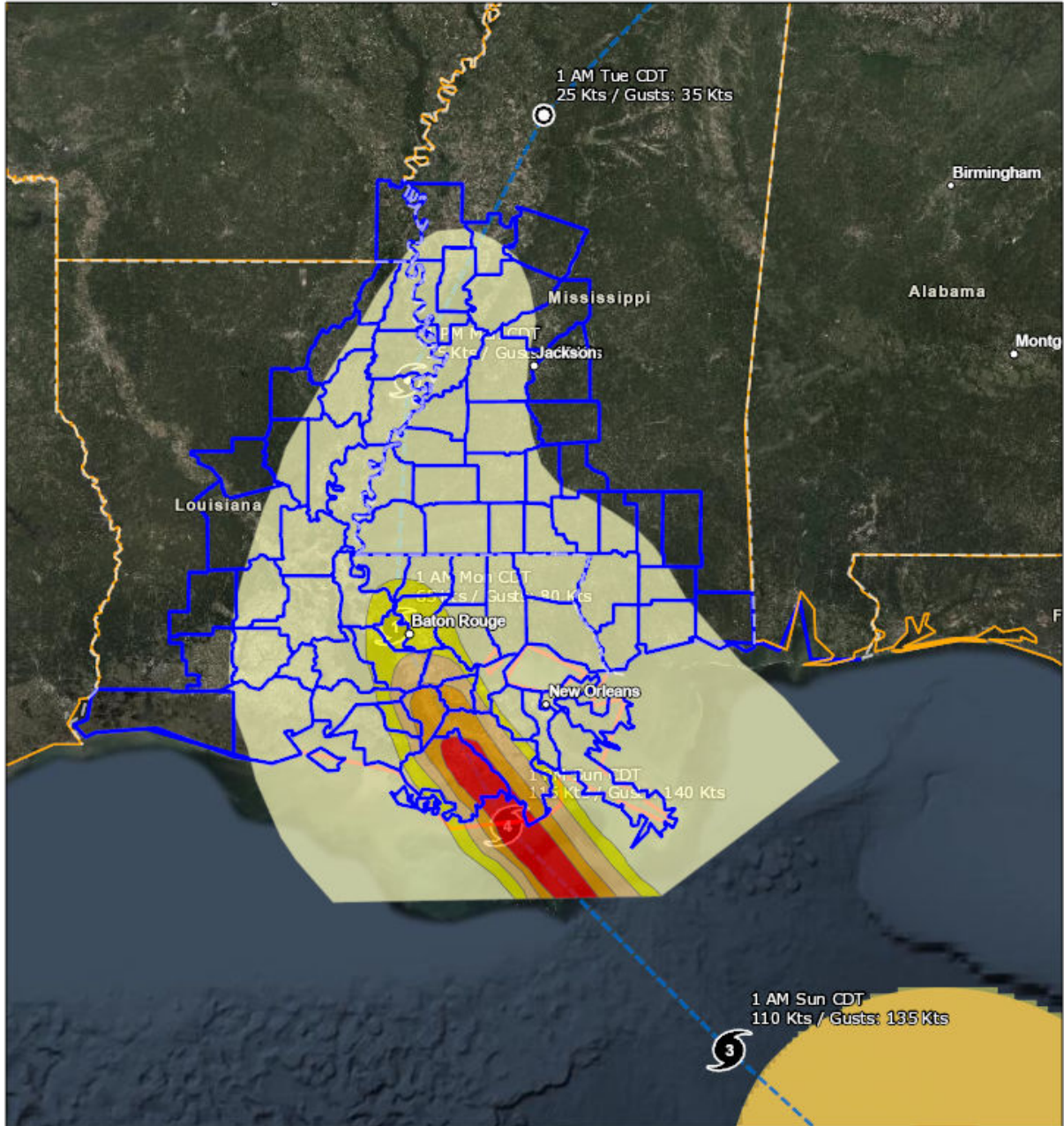
1. There is a danger of life-threatening storm surge inundation Sunday along the coasts of Louisiana, Mississippi, and Alabama within the Storm Surge Warning area. Extremely life-threatening inundation of 9 feet or greater above ground level is possible somewhere within the area from Morgan City, Louisiana, to the coast of Mississippi. Overtopping of local levees outside of the Hurricane and Storm Damage Risk Reduction System is possible where local inundation values may be higher. Interests throughout the warning area should follow any advice given by local officials.
2. Ida is expected to be an extremely dangerous major hurricane when it reaches the coast of Louisiana. Hurricane-force winds are expected Sunday in portions of the Hurricane Warning area along the Louisiana coast, including metropolitan New Orleans, with potentially catastrophic wind damage possible where the core of Ida moves onshore. Actions to protect life and property should be rushed to completion in the warning area.
3. Damaging winds, especially in gusts, will spread inland near the track of the center of Ida across portions of southeastern Louisiana and southwestern Mississippi Sunday night and early Monday. These winds will likely lead to widespread tree damage and power outages.
4. Ida is likely to produce heavy rainfall Sunday into Monday across the central Gulf Coast from southeast Louisiana, coastal Mississippi, and far southwestern Alabama, resulting in considerable to life-threatening flash and urban flooding and significant river flooding impacts. As Ida moves inland, significant flooding impacts are possible across portions of the Lower Mississippi, Tennessee, and Ohio Valleys through Wednesday.



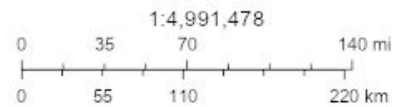
For more information go to hurricanes.gov







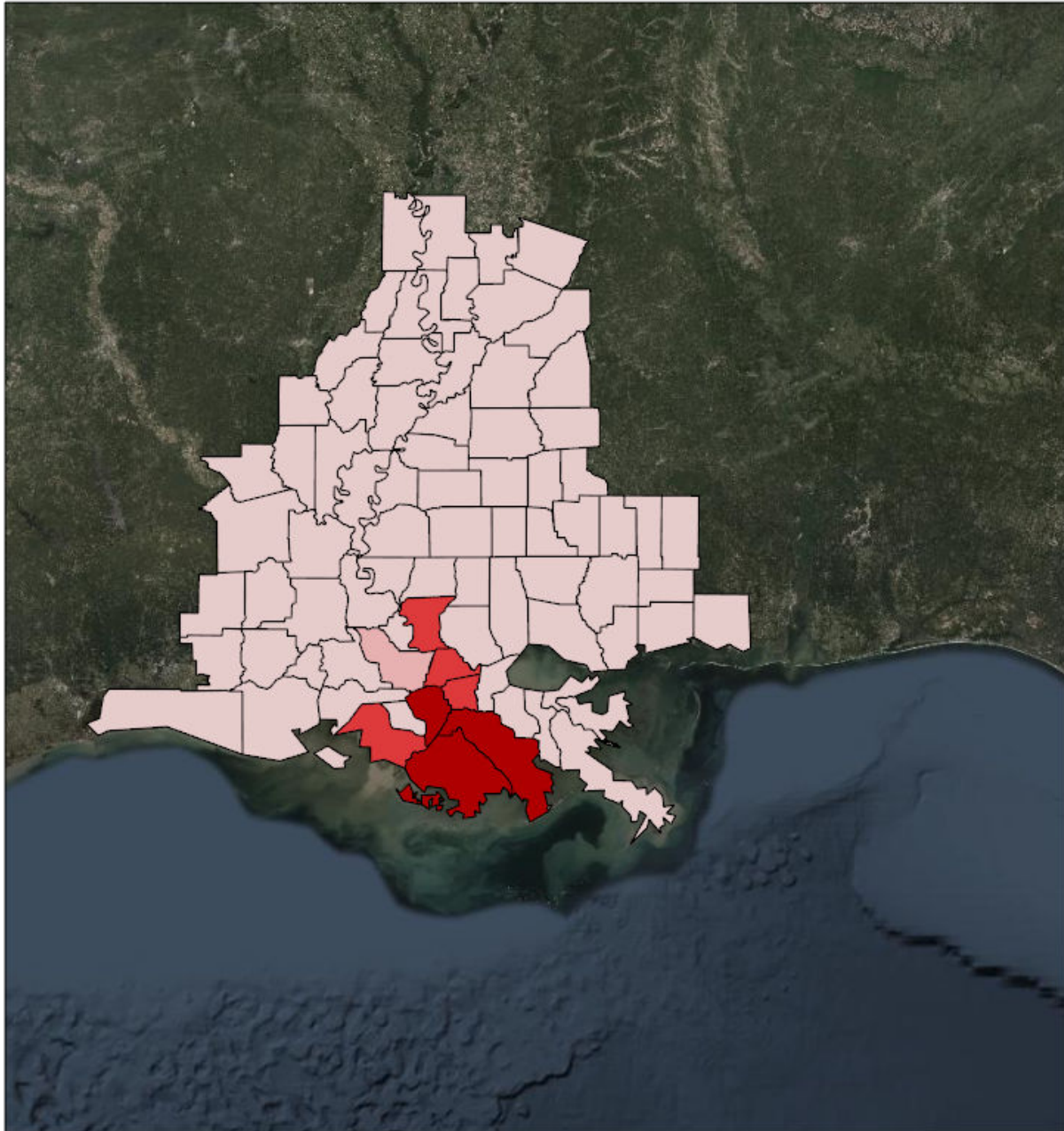
- ▬ Counties
- State Boundaries
- Mission Model Swaths
 - TS
 - Cat 1
 - Cat 2
 - Cat 3
 - Cat 4
- Observed (Best Track) Track Line
- Observed (Best Track) Center Position
- Observed (Best Track) Winds >= 34 knots (39 mph)
- Observed (Best Track) Winds >= 50 knots (58 mph)
- Observed (Best Track) Winds >= 64 knots (74 mph)






Source: NOAA, Esri, NOAA/NOS/OCS nowCOAST, NOAA/NWS/NHC, NOAA/NWS/CPHC, Esri, HERE, Garmin, FAO, NOAA, USGS, EPA, Source: Esri, DigitalGlobe, GeoEye, Earthstar Geographics, CNES/Airbus DS, USDA, USGS, AeroGRID, IGN, and the GIS User Community

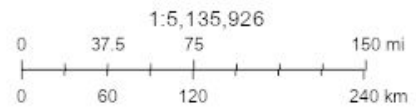
Created by SimSuite

Debris



Debris

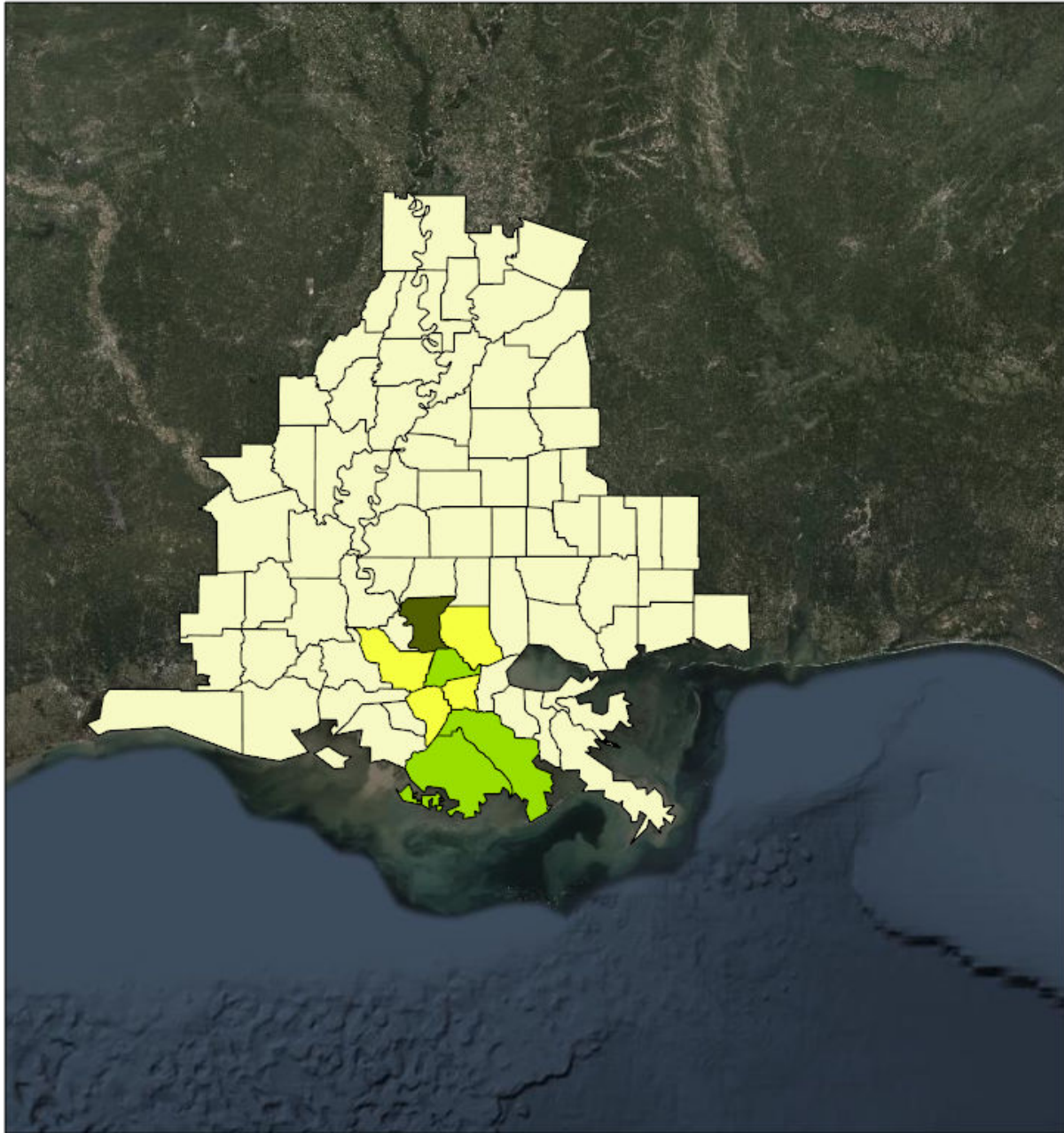
-  < 100,000 cubic yards
-  100,000 - 249,000 cubic yards
-  500,000 - 999,999 cubic yards



Source: Esri, DigitalGlobe, GeoEye, Earthstar Geographics, CNES/Airbus DS, USDA, USGS, AeroGRID, IGN, and the GIS User Community

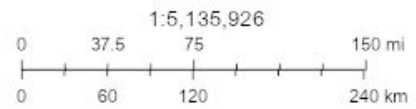
Created by SimSuite

Est. Temp. Roofing



Est. Temp. Roofing

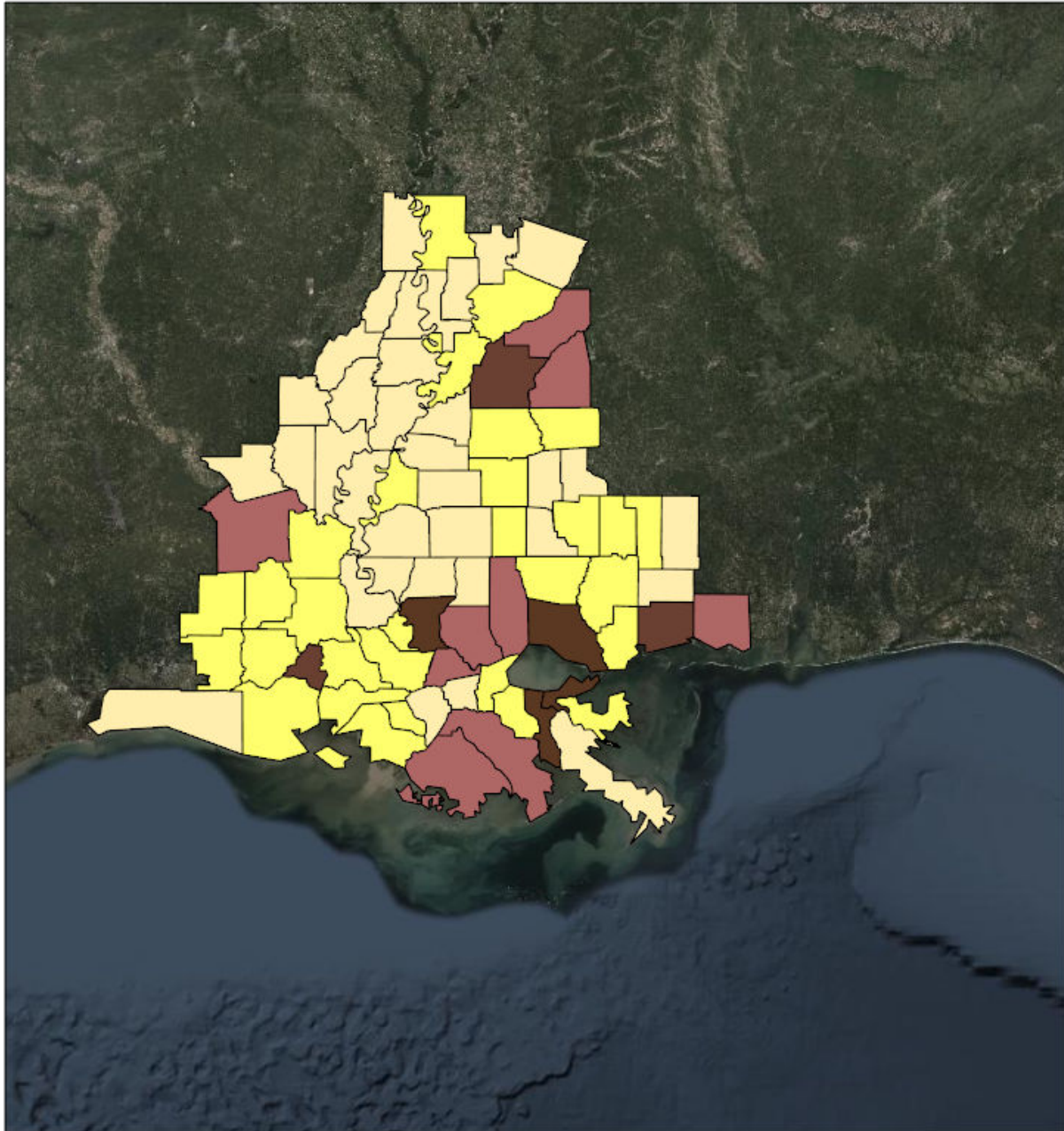
- < 100 units
- 100 - 499 units
- 500 - 999 units



Source: Esri, DigitalGlobe, GeoEye, Earthstar Geographics, CNES/Airbus DS, USDA, USGS, AeroGRID, IGN, and the GIS User Community

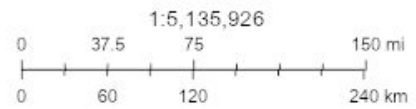
Created by SimSuite

Population



Population

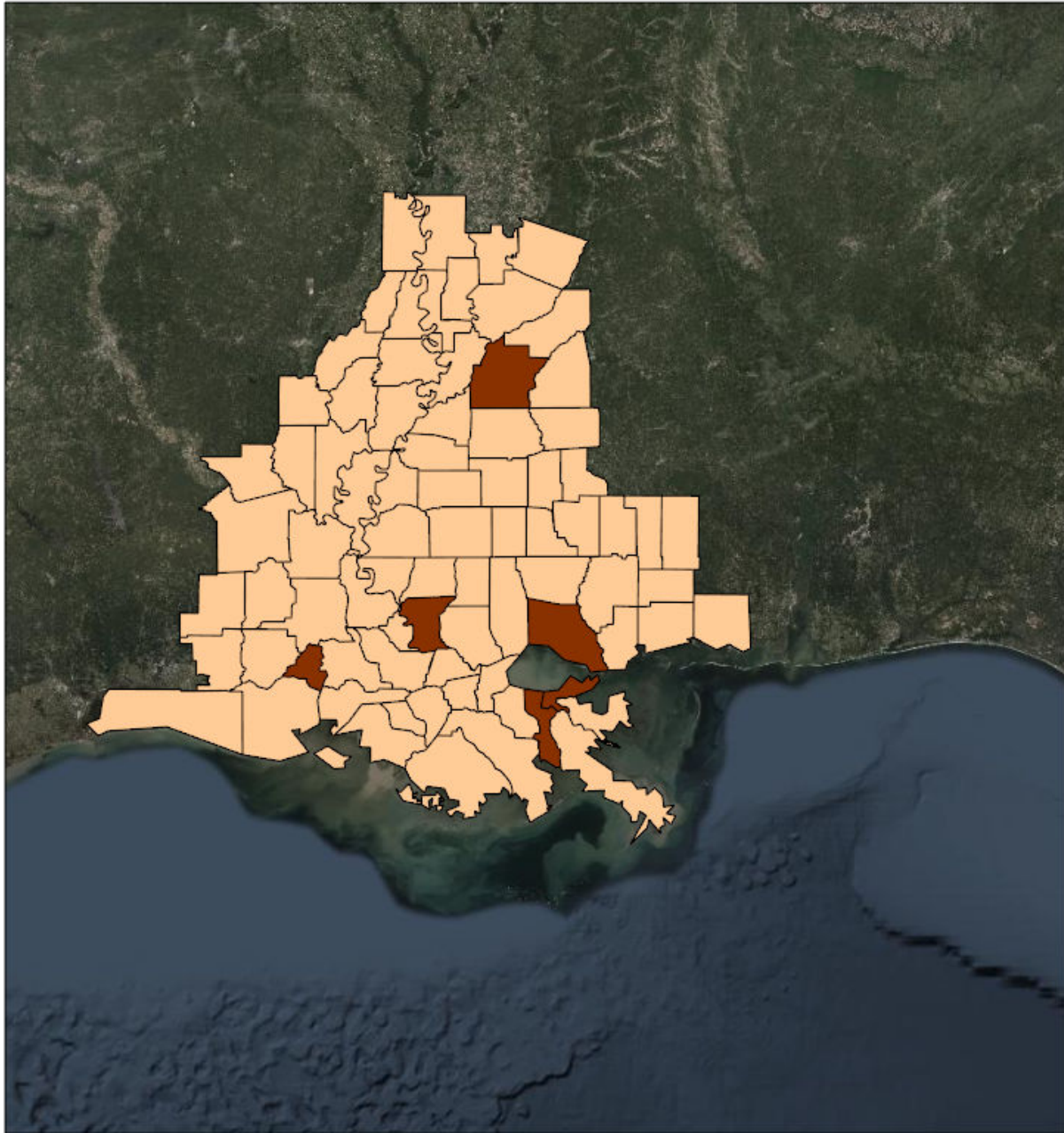
- < 25,000 persons
- 25,000 - 99,000 persons
- 100,000 - 174,999 persons
- 175,000 - 249,000 persons



Source: Esri, DigitalGlobe, GeoEye, Earthstar Geographics, CNES/Airbus DS, USDA, USGS, AeroGRID, IGN, and the GIS User Community

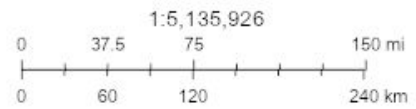
Created by SimSuite

Households



Households

- < 7,500 Households
- 15,000 - 24,999 Households
- 25,000 - 49,999 Households



Source: Esri, DigitalGlobe, GeoEye, Earthstar Geographics, CNES/Airbus DS, USDA, USGS, AeroGRID, IGN, and the GIS User Community

Created by SimSuite

Mission Summary



The mission models account for storm surge and wind damage only, but do not account for other related storm hazards that may affect the mission estimates.

Mission Summary	
Total Counties	79
Debris (cu. yd.)	8,969,542
Est. Temp. Roofing (units)	5,112
Act. Temp. Roofing (units)	1,687
Population	5,202,560
Households	1,872,759

Population Distribution	
Tropical Storm	3,473,913
Category 1	652,123
Category 2	172,828
Category 3	109,244
Category 4	58,705

ARKANSAS	Yds of Debris (0)	Est. Roof Units (0)	Act. Roof Units (0)	Population (11,204)	Households (4,579)
Chicot	0	0	0	11,204	4,579

LOUISIANA	Yds of Debris (8,969,542)	Est. Roof Units (5,112)	Act. Roof Units (1,687)	Population (3,634,556)	Households (1,299,007)
Acadia	0	0	0	64,233	22,841
Allen	0	0	0	27,184	8,516
Ascension	668,753	763	252	124,274	37,790
Assumption	1,229,533	265	87	24,326	8,736
Avoyelles	0	0	0	43,493	15,432
Caldwell	0	0	0	10,242	3,905
Cameron	0	0	0	7,408	2,575
Catahoula	0	0	0	10,384	3,834
Concordia	0	0	0	20,789	7,613
East Baton Rouge	836,149	1,715	566	455,183	172,057
East Carroll	0	0	0	7,690	2,552
East Feliciana	8,669	18	6	20,133	7,022
Evangeline	0	0	0	35,225	12,829
Franklin	0	0	0	21,409	7,904
Grant	0	0	0	23,270	7,496
Iberia	40,708	57	19	74,654	26,778
Iberville	112,486	157	52	34,675	11,072
Jefferson	13,639	28	9	436,044	169,647
Jefferson Davis	0	0	0	33,324	11,771

La Salle	0	0	0	15,517	5,468
Lafayette	0	0	0	249,487	87,027
Lafourche	1,798,705	857	283	102,036	35,486
Livingston	71,742	147	49	142,761	46,007
Madison	0	0	0	11,737	4,025
Orleans	0	0	0	378,952	142,158
Plaquemines	0	0	0	24,106	8,077
Pointe Coupee	12,144	25	8	22,931	9,082
Rapides	0	0	0	138,904	50,401
Richland	0	0	0	21,497	7,551
St. Bernard	0	0	0	42,016	13,221
St. Charles	20,479	42	14	55,762	18,557
St. Helena	0	0	0	11,008	4,333
St. James	557,925	207	68	22,785	7,717
St. John the Baptist	69,155	98	32	46,127	15,965
St. Landry	0	0	0	85,834	31,857
St. Martin	16,033	33	11	55,795	19,216
St. Mary	539,328	68	22	54,463	20,457
St. Tammany	0	0	0	259,212	87,521
Tangipahoa	0	0	0	133,414	45,135
Tensas	0	0	0	5,076	2,172
Terrebonne	2,926,964	535	177	116,998	40,091
Vermilion	0	0	0	61,784	21,889
Washington	0	0	0	48,152	18,113
West Baton Rouge	44,048	90	30	26,881	8,688
West Carroll	0	0	0	11,522	4,452
West Feliciana	3,083	6	2	15,859	3,971

MISSISSIPPI	Yds of Debris (0)	Est. Roof Units (0)	Act. Roof Units (0)	Population (1,556,800)	Households (569,173)
Adams	0	0	0	31,160	12,643
Amite	0	0	0	12,545	5,351
Claiborne	0	0	0	9,331	3,440
Copiah	0	0	0	29,484	10,708
Forrest	0	0	0	75,662	28,746
Franklin	0	0	0	8,081	3,211
Hancock	0	0	0	48,810	17,380
Harrison	0	0	0	205,027	71,476
Hinds	0	0	0	243,165	91,351
Holmes	0	0	0	18,437	6,926
Humphreys	0	0	0	8,556	3,373
Issaquena	0	0	0	1,325	472
Jackson	0	0	0	144,768	52,205
Jefferson	0	0	0	7,644	2,929
Jefferson Davis	0	0	0	11,776	4,977
Lamar	0	0	0	58,929	21,542
Lawrence	0	0	0	13,333	5,078
Lincoln	0	0	0	35,319	13,296
Madison	0	0	0	107,968	35,829
Marion	0	0	0	26,158	10,135
Pearl River	0	0	0	56,827	20,816
Perry	0	0	0	12,551	4,674
Pike	0	0	0	40,438	15,370
Rankin	0	0	0	150,867	52,836
Sharkey	0	0	0	4,786	1,834
Simpson	0	0	0	27,769	10,330
Stone	0	0	0	18,163	6,165
Walthall	0	0	0	14,801	5,888
Warren	0	0	0	48,277	18,941
Washington	0	0	0	48,082	18,936
Wilkinson	0	0	0	9,239	3,455
Yazoo	0	0	0	27,522	8,860

Critical Infrastructure

Summary			
Total Critical Facilities		1,659	
Power Requirements (kW)		60,627.5	
Range (kW)			
Communications	# FED Gen Req	Range (kW)	Req kW
AM Antennas (17)	0.9	35 - 75	46.8
Cellular Towers (74)	44.4	35 - 75	2,442.0
FM Antennas (45)	2.3	35 - 75	123.8
Education	# FED Gen Req	Range (kW)	Req kW
Private Schools (85)	0.0	200 - 300	0.0
Public Schools (313)	93.9	200 - 300	23,475.0
Colleges and Universities (43)	0.9	200 - 300	215.0
Emergency Services	# FED Gen Req	Range (kW)	Req kW
911 Call Centers (0)	0.0	15 - 35	0.0
Emergency Medical Service (190)	19.0	15 - 35	475.0
Fire Stations (244)	24.4	15 - 35	610.0
Service Providers (0)	0.0	0 - 0	0.0
Healthcare	# FED Gen Req	Range (kW)	Req kW
Nursing Homes (77)	11.5	35 - 100	779.6
Hospitals (43)	12.9	800 - 2000	18,060.0
Urgent Care Facilities (19)	3.8	200 - 300	950.0
Military	# FED Gen Req	Range (kW)	Req kW
Air National Guard (ANG) Sites (0)	0.0	15 - 35	0.0
Army National Guard (ARNG) Sites (11)	0.0	15 - 35	0.0
National Security Government Military Facilities (71)	0.0	15 - 35	0.0
Law Enforcement	# FED Gen Req	Range (kW)	Req kW
Prison Points (20)	4.0	400 - 600	2,000.0
Local Police (31)	3.1	15 - 35	77.5
State Police (4)	0.2	15 - 35	5.0
Correctional Facilities (0)	0.0	400 - 600	0.0
State and Local EOC	# FED Gen Req	Range (kW)	Req kW
Local Emergency Operations Centers (12)	2.4	15 - 40	66.0
State Emergency Operation Centers (EOCs) (1)	0.2	15 - 35	5.0

State Facilities	# FED Gen Req	Range (kW)	Req kW
Governors Mansion (1)	0.0	100 - 200	0.0
Major State Government Building (24)	2.4	100 - 200	360.0

Transportation	# FED Gen Req	Range (kW)	Req kW
Ports (177)	0.0	600 - 1200	0.0
Amtrak Stations (2)	0.0	100 - 300	0.0
Bus Stations (28)	0.0	100 - 300	0.0
Intermodal Terminal Facilities (6)	0.0	100 - 300	0.0
Railroad Stations (1)	0.0	100 - 300	0.0
Public-Use Airports (102)	12.2	40 - 100	856.8

Water	# FED Gen Req	Range (kW)	Req kW
Water Treatment Facilities (0)	0.0	800 - 2000	0.0
Wastewater Treatment Plants (18)	7.2	800 - 2000	10,080.0

COVID-19

#	County	Cases
1	Jefferson	65,340
2	East Baton Rouge	58,416
3	Orleans	43,361
4	St. Tammany	39,777
5	Lafayette	34,858
6	Harrison	28,793
7	Hinds	28,436
8	Livingston	22,291
9	Tangipahoa	20,978
10	Jackson	20,795
11	Ascension	19,952
12	Rankin	19,385
13	Rapides	18,539
14	Terrebonne	17,784
15	Lafourche	16,391
16	Madison	12,941
17	St. Landry	12,418
18	Forrest	11,911
19	Iberia	11,197
20	Acadia	9,346
21	Lamar	9,311
22	Vermilion	8,883
23	St. Charles	8,289
24	St. Mary	7,782
25	St. Martin	7,617
26	Pearl River	7,521
27	Washington	7,069
28	St. Bernard	6,351
29	Hancock	6,311
30	Avoyelles	6,247
31	Washington	6,198
32	Washington	6,198
33	Warren	5,870
34	St. John the Baptist	5,816
35	Iberville	5,446
36	Evangeline	5,044
37	Pike	4,797
38	Lincoln	4,731
39	East Feliciana	4,250

40	Allen	4,145
41	Jefferson Davis	4,134
42	West Baton Rouge	4,130
43	Adams	3,947
44	Yazoo	3,883
45	Copiah	3,831
46	Simpson	3,825
47	Franklin	3,714
48	Marion	3,646
49	Richland	3,559
50	Plaquemines	3,558
51	Pointe Coupee	3,522
52	Assumption	3,336
53	Grant	3,316
54	Stone	3,135
55	St. James	3,041
56	Concordia	2,792
57	Holmes	2,368
58	LaSalle	2,329
59	Madison	1,903
60	Lawrence	1,852
61	Walthall	1,826
62	Chicot	1,825
63	Perry	1,723
64	Amite	1,716
65	West Carroll	1,581
66	Catahoula	1,567
67	Caldwell	1,523
68	Jefferson Davis	1,511
69	West Feliciana	1,409
70	East Carroll	1,399
71	St. Helena	1,226
72	Claiborne	1,192
73	Humphreys	1,127
74	Franklin	1,029
75	Wilkinson	925
76	Jefferson	819
77	Cameron	782
78	Sharkey	573
79	Tensas	434
80	Issaquena	184